

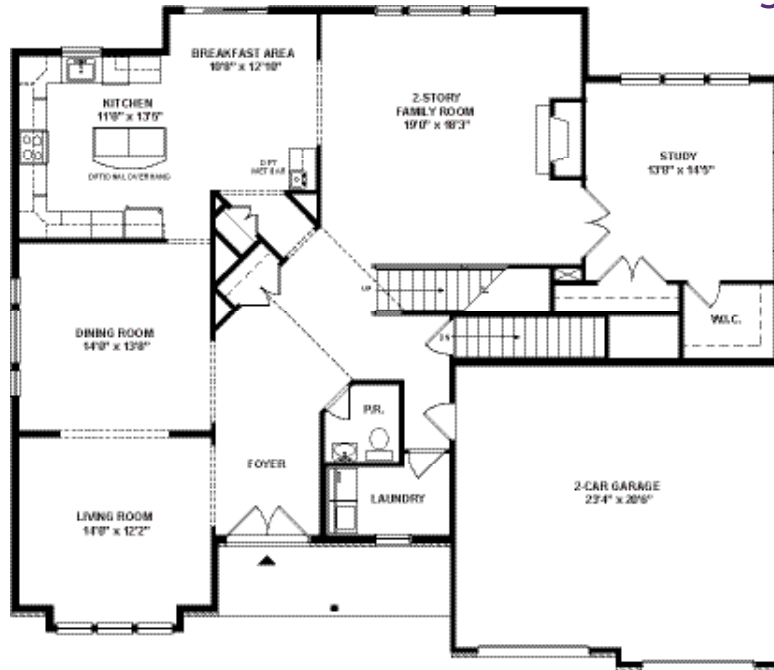


RICHMOND



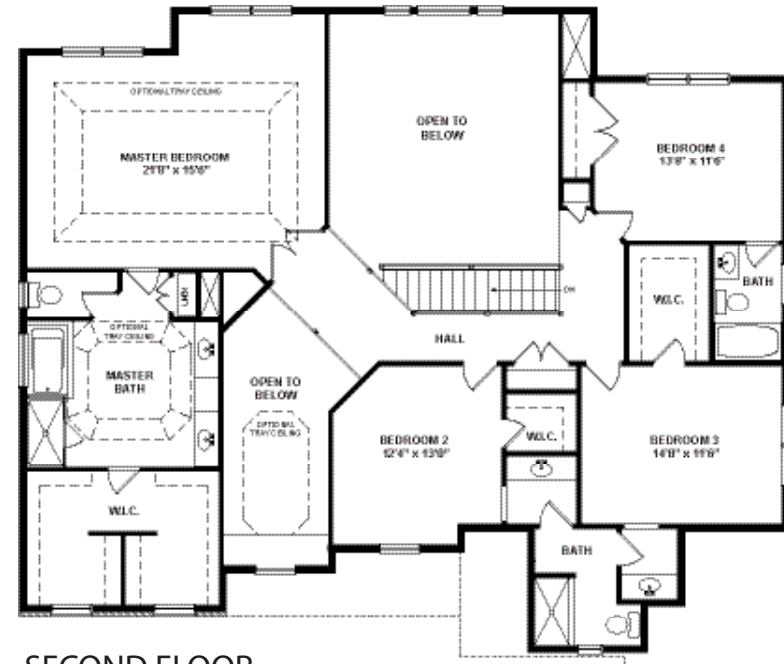
# RICHMOND

3,675 sq. ft.



FIRST FLOOR

This classic 3675 sq. ft. Richmond combines many of the finest elements of any home under one roof. Multiple roof-lines, a covered front porch, large bay and arched windows and unique criss-cross pattern of the upper and lower hallways create a home rich in detail. To the left of the spacious foyer are the adjoining formal spaces of both living and dining rooms. Each room is distinct in itself with over-sized windows, attractive offsets and wing walls or optional columns defining the areas. And for occasional large gatherings, the rooms readily combine. Continuing through foyer, past attractive angles that conceal multiple closets, one enters the large island kitchen with its convenient breakfast area and optional wet bar. The rooms flow seamlessly into an inviting 2-story family room with fireplace.



SECOND FLOOR

A large 2nd floor master suite, entered through double doors includes separate sitting room and tray ceilings in both the bedroom and master bath, once again reflecting attention to detail. Note the dual vanities, the over-sized soaking tub and shower, huge closets and large linen closet where an optional stacked washer/dryer can be tucked away. Three additional bedrooms each have private bath access plus spacious closets. For those who might want additional flex room, we have detailed how space can be added over the family room with access from the upper hall.