



TETON

 **KAY BUILDERS**
6 DECADES OF EXCELLENCE

TETON

2,222 sq. ft.

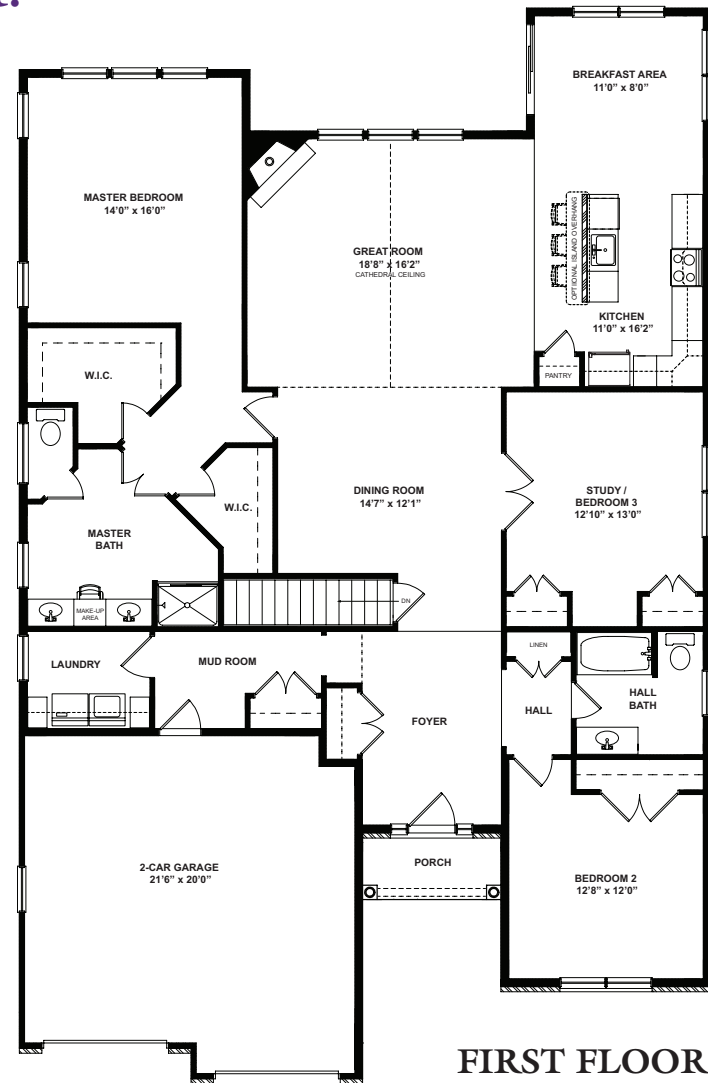
Multiple rooflines, special masonry accents and a dual columned covered porch entry delineate the universally pleasing facade of this 2,222 sq. ft. ranch home...

Entering the 2-story foyer, one is greeted by an elegant view of the dining room and expansive great room, with its full bank of windows and corner fireplace. The continuity of these 2 rooms provides ultimate flexibility. They can be treated as separate spaces, with a formal dining room, or combined to provide conversation areas, TV viewing and casual dining -- perfectly suited for times when extended family and guests gather.

The sizeable L-shaped island kitchen features a pantry plus loads of cabinets while the roomy breakfast area provides comfortable seating for friendly conversation as dinner is being prepared.

An entire wing of the home is devoted to a private master suite where attractive angles lead past 2 walk-in closets to a large dual vanity salon bath. The opposite wing contains a full bath and 2 additional rooms that can serve as bedrooms. One of these rooms, with its double door entry just off the great room, could be re-purposed as a home office, parlor or media center as well as an occasional guest bedroom.

Of special note are the 2 generously sized closets to the left of the foyer plus a separate mud room and laundry room. These two very practical areas provide storage space galore. Both attractive and functional, they help keep everything in its proper place.



All floorplans and renderings shown are artist's renditions and are subject to change without notice. All floorplans and renderings may show upgrades or optional features not included as standard. All features are subject to change without notice. Please consult salesperson for details. All dimensions are approximate and subject to field variations. Builder is not responsible for printer's errors and/or omissions. © Kay Builders 2017